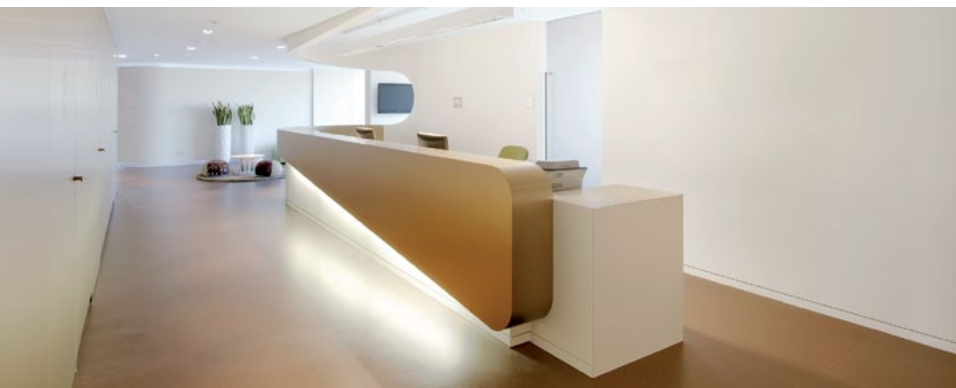


Vectorworks.Architect | for Interior Design



## Seven Reasons To Use Vectorworks Architect

- Easy to learn
- Superior presentations
- Efficient planning
- Flexibility in design and collaboration
- 3D conceptualisation and modelling
- Visualisation within Vectorworks
- Comprehensive package

“Vectorworks is easier to use than other programs; everything can be planned quite intuitively. Furthermore, it gives us great freedom which is particularly important to us.”

Eckhart Esters, landau + kindelbacher, Munich



Courtesy of GFG /Gruppe für Gestaltung GmbH, Bremen, Picture: Tom Kleiner / GFG

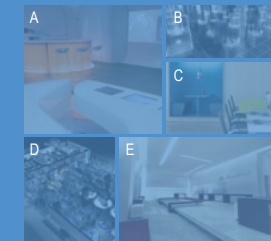
## Dear Interior Designers and Architects,

Thank you for your interest in Vectorworks® software, one of the world's most widely used CAD programs.

If you are looking for a solution that provides optimal support from first draft to execution, then look no further. The Vectorworks application can handle all phases of your design process. And, you won't find another professional design program that includes so much for such a reasonable price.

On the following pages, we'll highlight seven good reasons why so many Interior Designers worldwide have chosen the Vectorworks software as their tool for design.

Welcome to the world of Vectorworks!



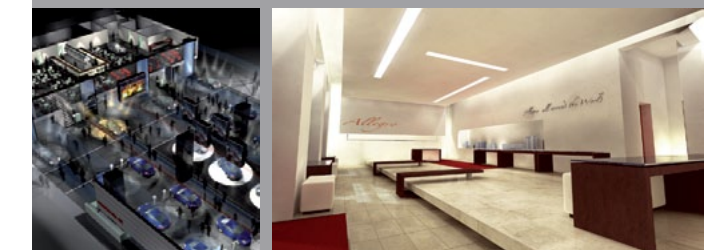
A: Stefan Kormmeier Innenausbau & Konstruktion,  
Zell a. H., [www.kormmeier-online.de](http://www.kormmeier-online.de)

B: Daniel Heibisch, Deizisau

C: Vitra, Weil am Rhein

D: Raumstation, Köln

E: Carlo Magri, Magri Design, Italy



## Easy to Learn

### Intuitive Interface and Drafting Tools

Do what you like to do best—design. You won't waste time getting up to speed because the Vectorworks Architect software's simple, customisable interface and what-you-see-is-what-you-get display make it easier to learn and use than standard CAD applications. No matter what you're switching from, the Vectorworks Architect application interface will be familiar.

### SmartCursor Help

No more workarounds—the SmartCursor™ assists you in all the applications. It is your personal coach and will offer help and advice when needed. As such, you can use Vectorworks software in a productive way right from the start.

### Construction Made Easy

All common wall assemblies, dynamic windows, doors, and stairs—are predefined and available to you. Walls can be configured with projections, recesses, or trims. Oblique components can easily be configured with a simple rotation. You decide whether your design is two- or three-dimensional.



Courtesy of Stefan Kornmeier Innenausbau & Konstruktion, Zell a. H., www.kornmeier-online.de

## Superior Presentations

### Personal Style

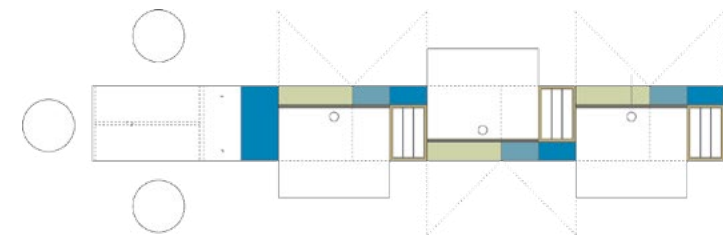
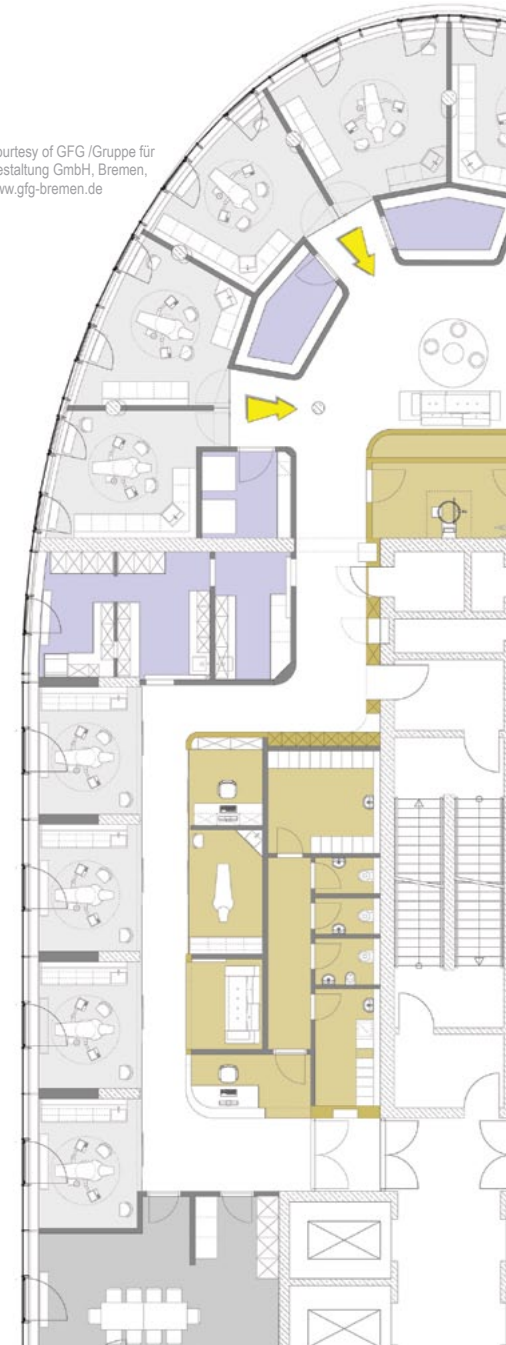
Each interior designer has his or her own personal style. Every project has specific presentation requirements—and each design is uniquely created by you. The graphic versatility of the Vectorworks program is one of the main reasons why so many interior designers work with it.

### Graphics

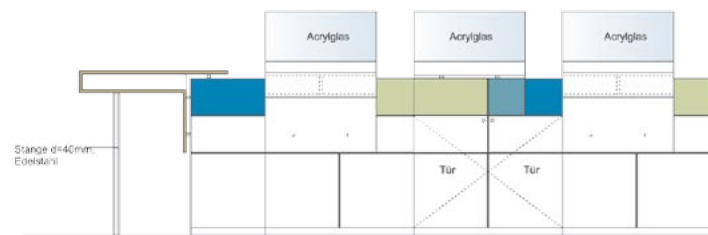
Augment the impact of your designs and models with transparencies, gradients, or 2D textures. Vectorworks software provides you with a wide range of graphical tools. Take advantage of these features to let your creativity run wild. The program offers millions of colours from RAL, Pantone®, Brillux, NCS Colour, etc., which let you create outstanding colour concepts.



Courtesy of GFG /Gruppe für Gestaltung GmbH, Bremen, www.gfg-bremen.de



Courtesy of Vanessa Schlotthauer, Herstein



Courtesy of landau + kindelbacher, München

Photo courtesy of Jan Bitter

## Efficient Planning

### Comprehensive Libraries

Take advantage of over 10,000 predefined objects: design furniture from Herman Miller or Knoll, standard furniture, people, and numerous flooring and building materials as well as hatching and textures. If this is not enough, you also have the flexibility to design and add your own objects and images to the library.

### Analysis and Reporting

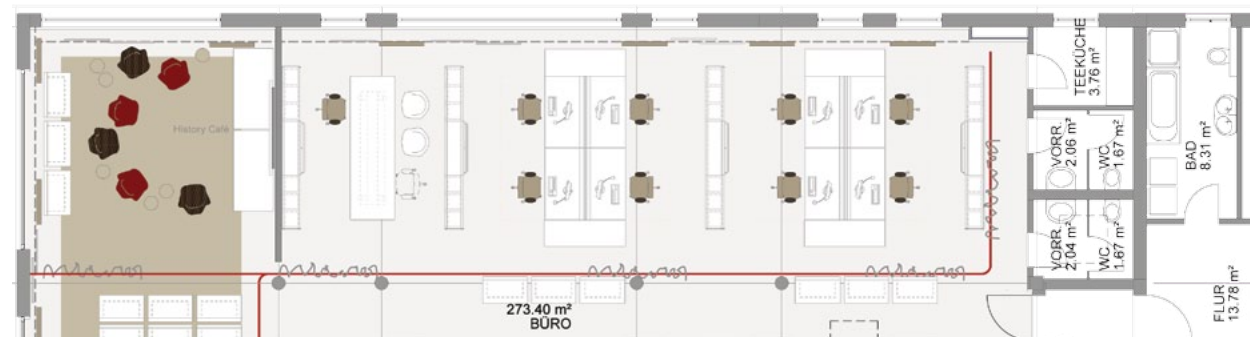
Design and calculate at the same time. The application goes further than automated schedules and materials takeoffs. It provides a user-defined, quick, and accurate way to assign custom data to any object and create unique reports like cost estimates.

### Intelligent Symbols and Plug-in Objects

Use a wide variety of furniture symbols from manufacturers. Or, make your own symbols or variations from existing ones. Plus, you can take advantage of intelligent plug-in objects that let you easily design and place countertops, cabinets, handrails, table configurations, seating layouts, and more.



A visualization of a client's project. Courtesy of Vitra GmbH



## Flexibility in Design and Collaboration

### One for All

A digital drawing board, 3D modeller, or integrated visualisation: take advantage of the flexibility Vectorworks software offers. Beautiful 2D designs, as well as detailed plans are created in no time. Or, use the Vectorworks application as a complete 3D package with the integrated rendering module, Renderworks®.

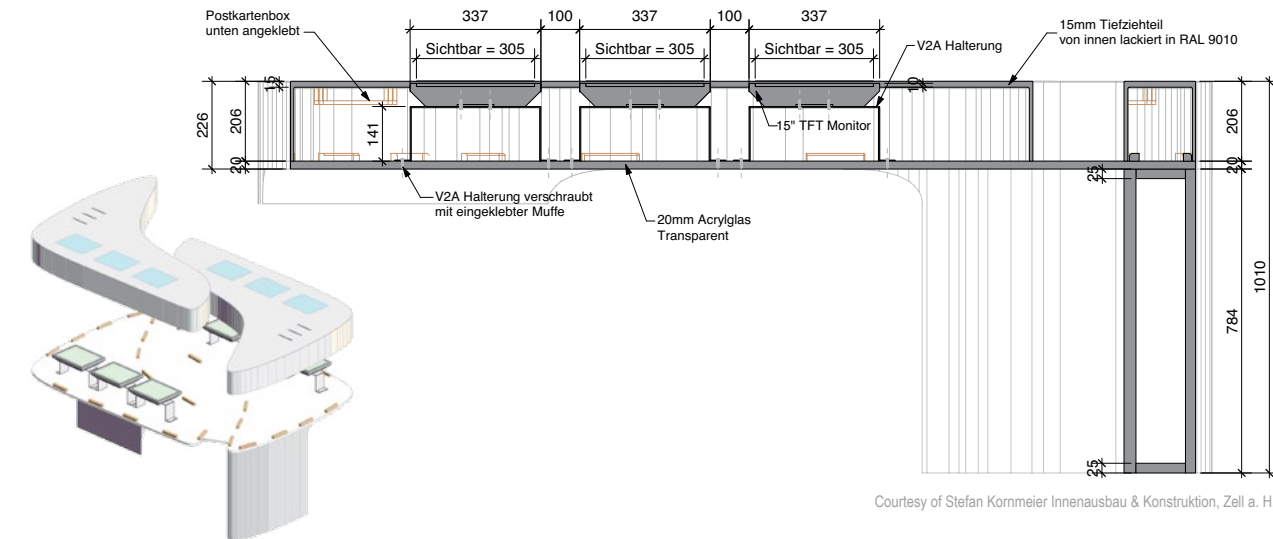
### Work Individually or as a Team

Thanks to the referencing technology, a project can be edited by several people. You can centrally manage office standards, such as title blocks or symbol libraries, so that the same standards are available to each contributor. That's how synergies occur in your projects!

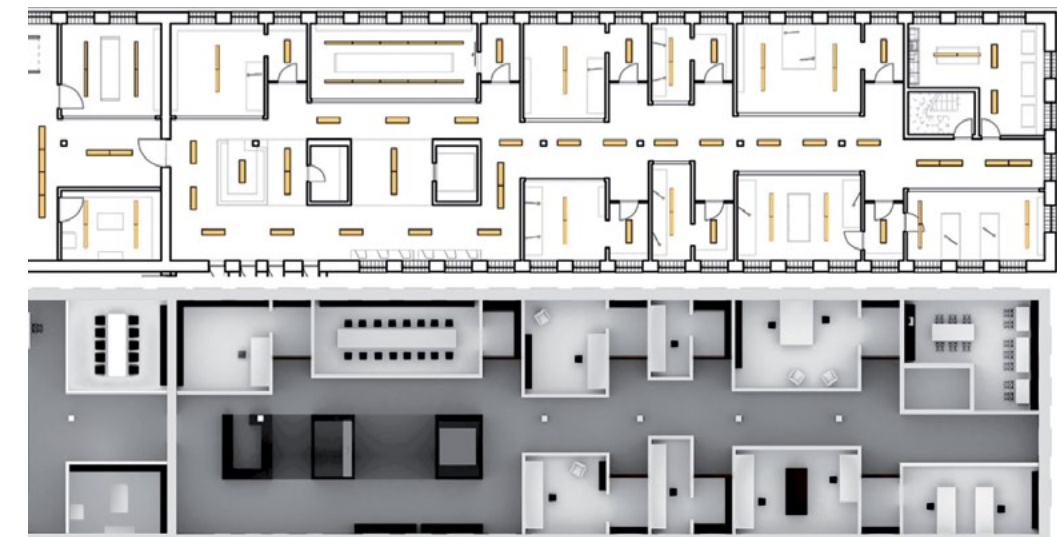
### Communicate with Design Partners

With Vectorworks software, you always keep in touch, thanks to numerous file import and export options for CAD, image editing, or bid submission programs. Among the most important are DXF, DWG, PDF, EPS, JPG, and TIF.

A free viewer also enables non-users to view and print Vectorworks documents.



Courtesy of Stefan Kormmeier Innenausbau & Konstruktion, Zell a. H.



Courtesy of Vanessa Schlotthauer and Viktoria Butin, FH Lemgo



## 3D Conceptualisation and Modelling

### Bring Your Visions to Life

The Vectorworks application and 3D are a great combination! The superior modelling capabilities of the program will impress everyone. 2D elements are positioned in space at will and are transformed into 3D objects by simply dragging the mouse.

### Intelligent Building Elements

With the Vectorworks application, you can add important building components with a click of the mouse. Not only are floors, walls, windows, and doors easy to add, but stairs, columns, rooms, and roofs are also available as "intelligent building elements."

### Freeform Modelling

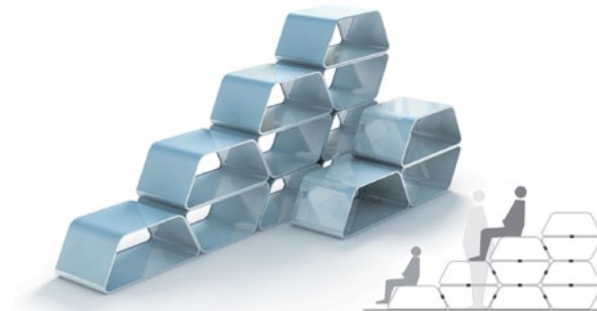
Model free and organic shapes quickly and easily! Vectorworks software sets the standard here, as well. The most advanced and powerful modelling kernel on the market, Parasolid®, offers 2D, 3D, and NURBS modeling. This means that you can create any constructible geometry. Model sophisticated designs without limits!



Courtesy of Lennin Mireles, Lmcaed Estudios de Animación



Courtesy of Robert Meyer Architekten, München



Courtesy of Sousa Santos Arquitectos, Lisbon, Portugal

## Visualisation with Vectorworks

### Vectorworks and Renderworks

Renderworks is the easy-to-use rendering module for Vectorworks software, built on the best-in-class CINEMA 4D render engine. Renderworks offers a vast array of high-quality presentation techniques just a mouse-click away, enabling you to create great high-end visualisations in a familiar environment.

### Vectorworks and CINEMA 4D

Do you want to create high-end images or even animations? Through the interface with CINEMA 4D, you can export your scenes and objects with all materials and light sources.



© Ralph Rieger, VisualServices Hamburg, www.visualservices.de



Courtesy of www.interiorcad.com



Courtesy of Martin Eggl, München

## Comprehensive Package

### Vectorworks Architect

The Vectorworks Architect program is a comprehensive package that can be used in all phases of your design process. Minimal training and affordable and flexible update possibilities, such as the "Vectorworks Service Select" service package complete the offer.

### Vectorworks Service Select

Vectorworks Service Select is a new subscription option for our customers to help them maximise their investment in Vectorworks software. Subscribers will receive the benefits of free updates, additional learning, resources, preferred technical support status, and a predictable budget.

Learn more about the service and availability at <http://serviceselect.vectorworks.net/learn-more>

Courtesy of Vitra GmbH



Courtesy of landau + kindelbacher, München





Nemetschek Vectorworks, Inc.  
7150 Riverwood Drive, Columbia, MD 21046-1295 USA  
[www.vectorworks.net](http://www.vectorworks.net) | T 410-290-5114 | F 410-290-8050

©2011 Nemetschek Vectorworks, Inc.  
Vectorworks and Renderworks are registered trademarks of Nemetschek Vectorworks, Inc.

Parasolid is a registered trademark of Siemens PLM Software.



**Training for Design | Design Software Solutions** are the largest reseller of Vectorworks software in the UK. We have worked with and trained hundreds of organisations, small and large, working in architecture, interior design, landscape design, and theatre/entertainment design. Our training courses and expertise are renowned for enabling designers to make the most of their Vectorworks investment.

**To find out more about Vectorworks and our Vectorworks training options,  
please call us on:**

**0845 003 7066**

[www.vectorworks-training.co.uk](http://www.vectorworks-training.co.uk)  
[info@vectorworks-training.co.uk](mailto:info@vectorworks-training.co.uk)



Courtesy of Duravit AG, Homberg